

OFFENWANGER

fluid components

**The key
to success -
unrivaled quality**



We develop and produce electromagnetic (solenoid) valves

27

YEARS OLD
ON MARKET

18

COUNTRIES
PRESENCE

2 000

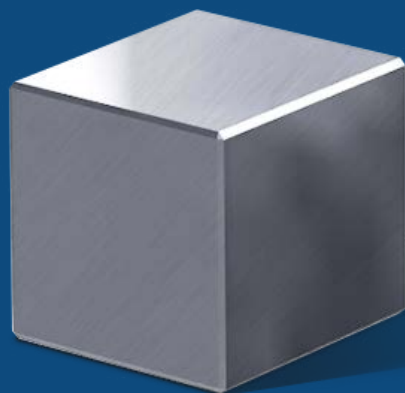
SATISFIED
CLIENTS

3 WE USE:



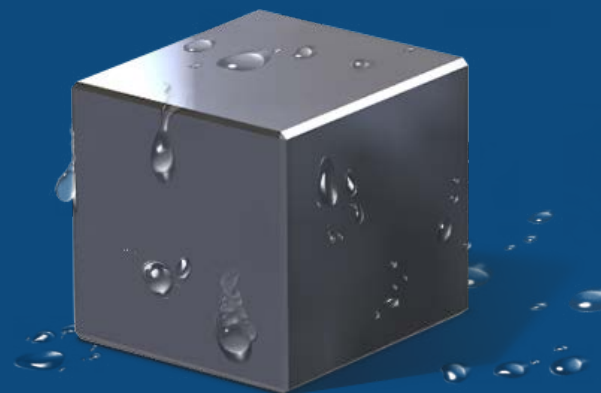
Brass

up to 80 bar
 $t^{\circ} -150^{\circ} / +150^{\circ}$



Aluminum

up to 50 bar
 $t^{\circ} -40^{\circ} / +80^{\circ}$

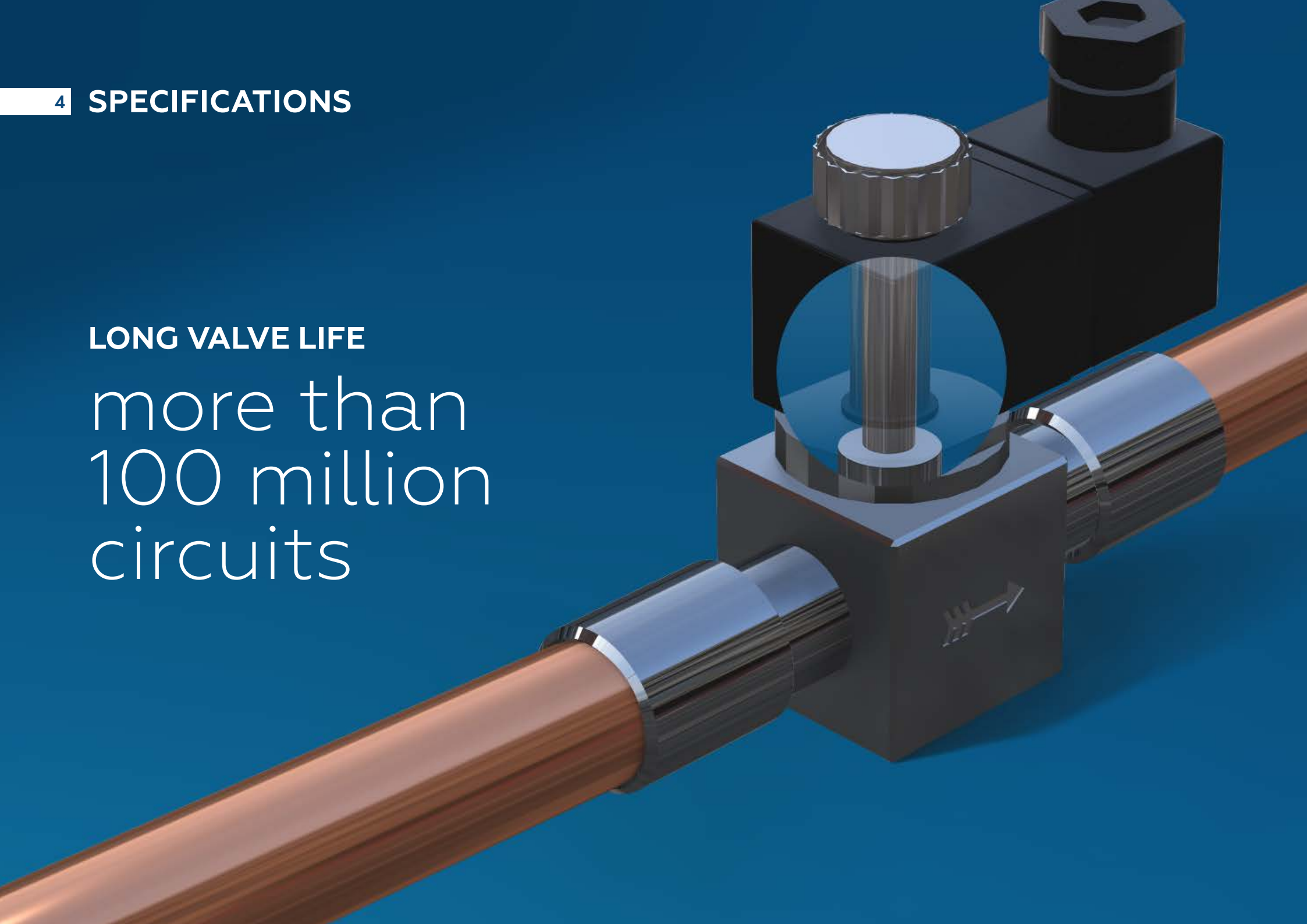


Steel V2A, V4A

up to 350 bar
 $t^{\circ} -150^{\circ} / +150^{\circ}$

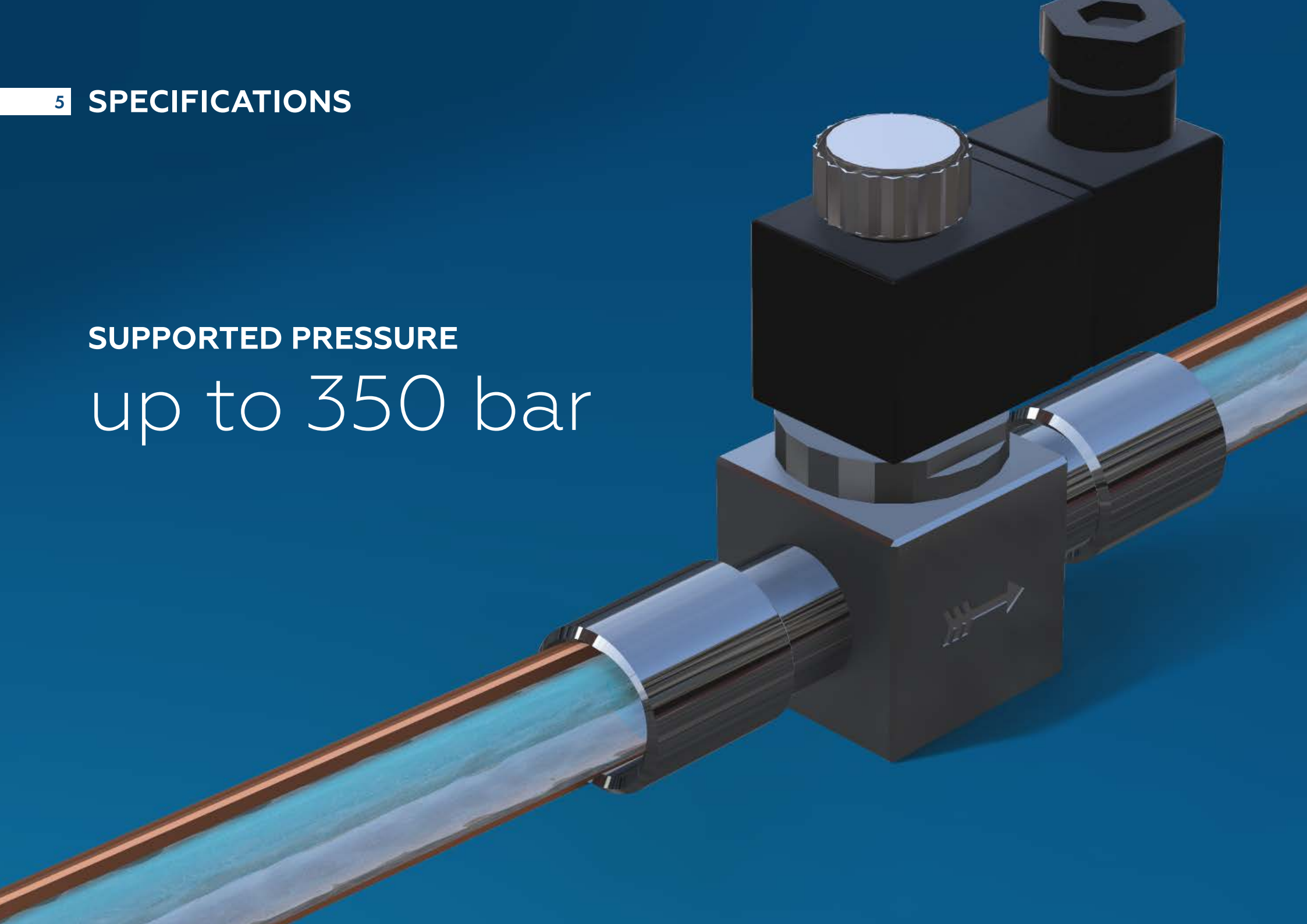
LONG VALVE LIFE

more than
100 million
circuits



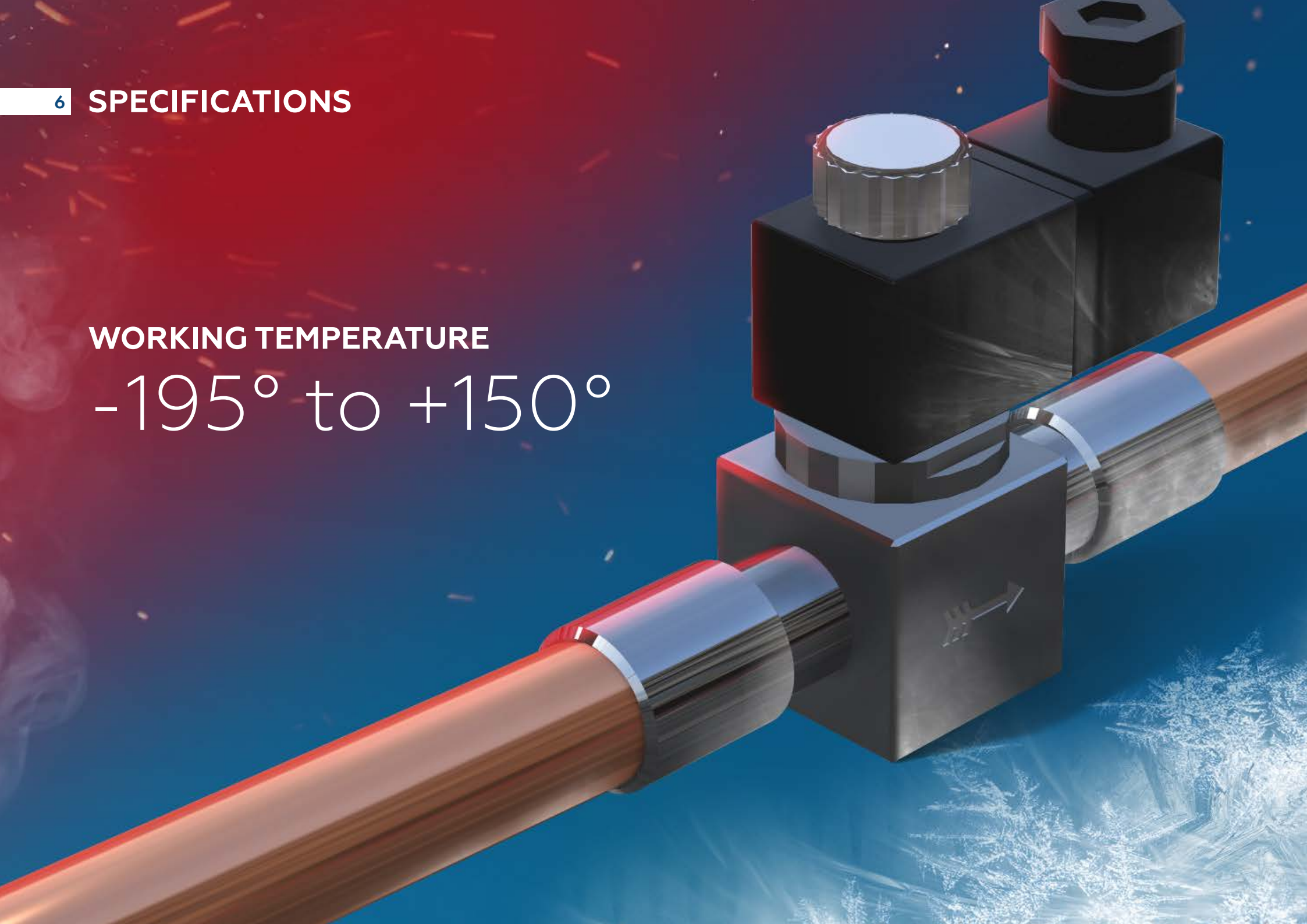
5 SPECIFICATIONS

SUPPORTED PRESSURE
up to 350 bar



6 SPECIFICATIONS

WORKING TEMPERATURE
-195° to +150°



7 MODULAR FOR ALL TYPES OF CONNECTIONS



FLARING



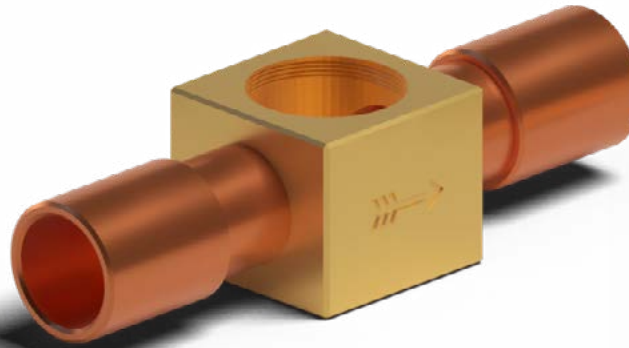
**MALE THREAD
WITH O-RING**



INTERNAL THREAD



**SOLDERING - WELDING
BRANCH PIPES**



**SOLDERING FOR COPPER
BRANCH PIPE**



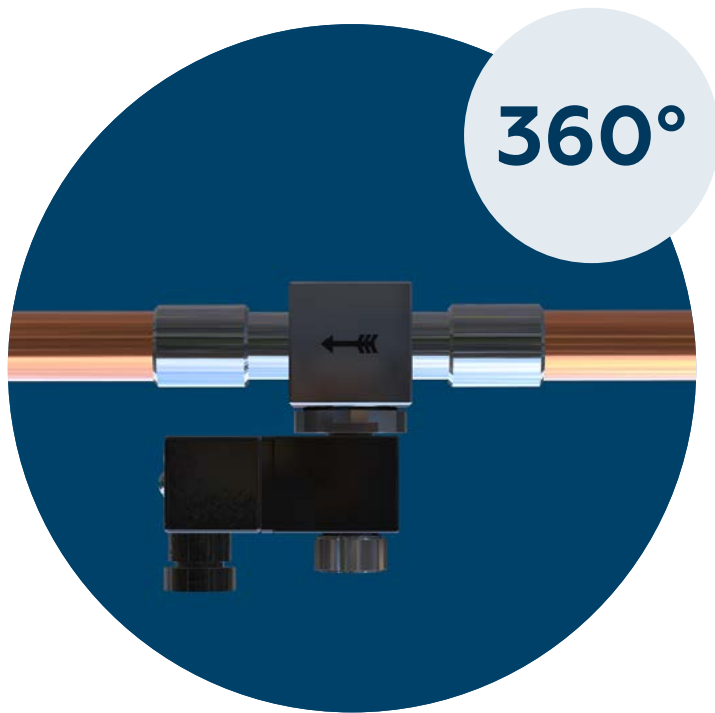
SOLID BODY

Our accessories are suitable for all types of connections

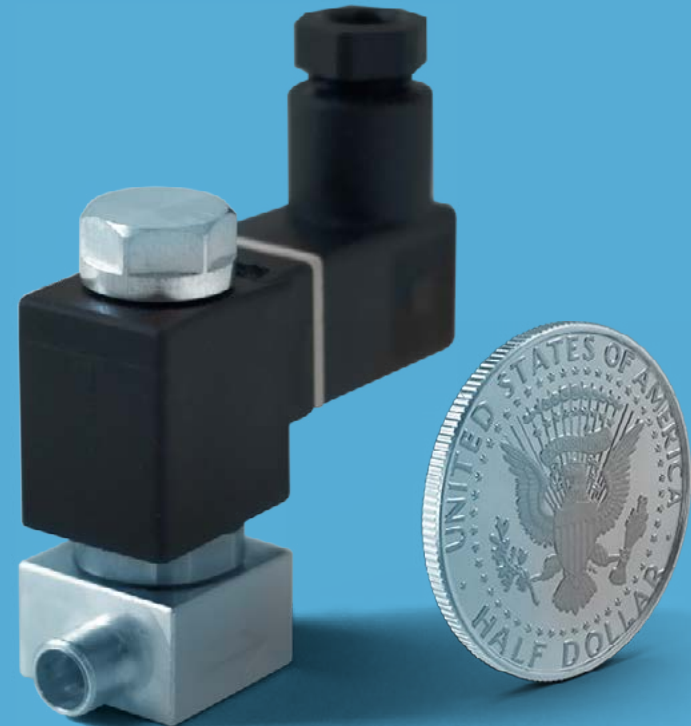


(Manual shut-off valve, check valve, shut-off valve, sight glass)

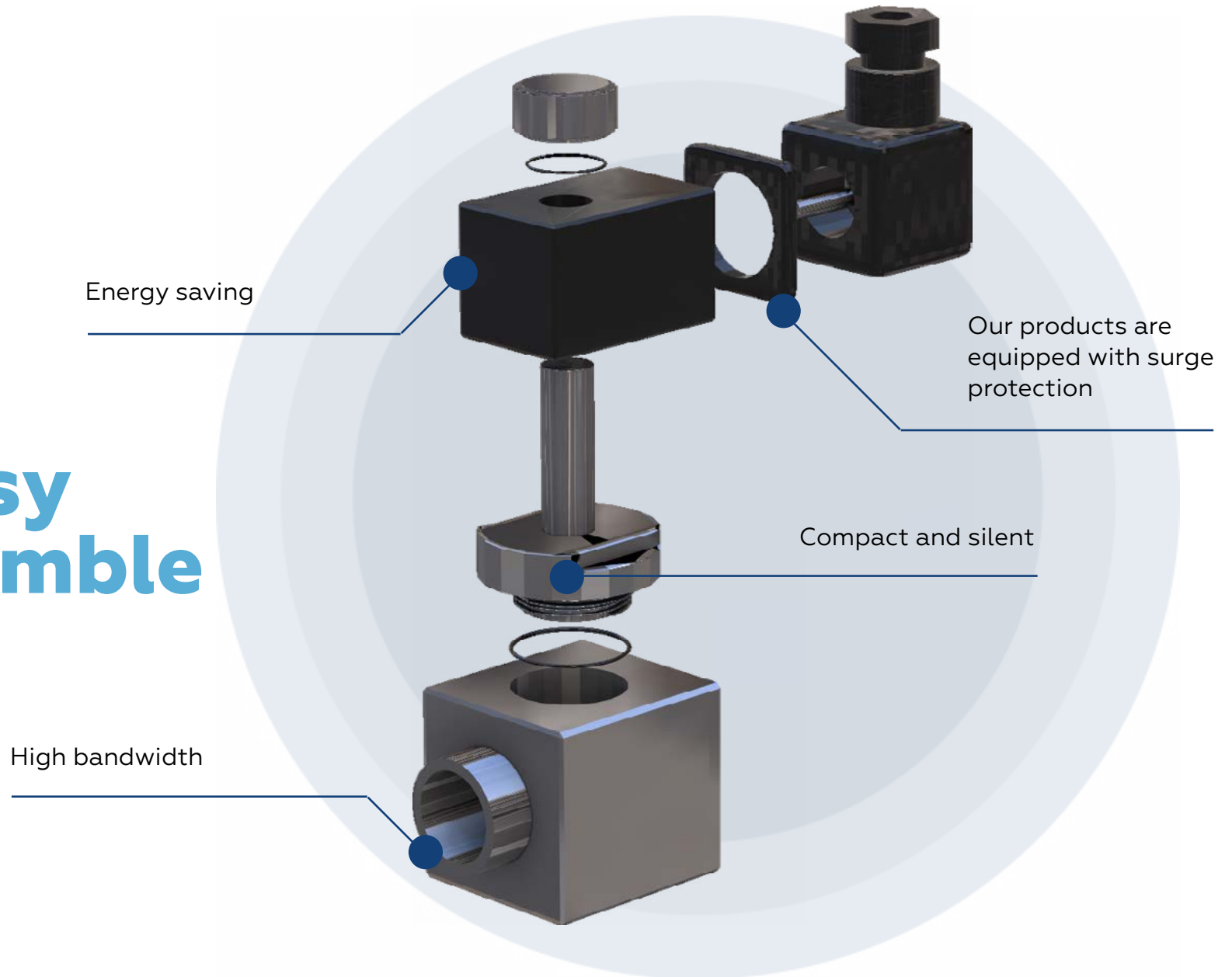
**Works in any
position**



**The most
compact on the
market**



Simple and easy to assemble



Series VA

Case Material: Brass, Aluminum Alloy, V2A and V4A Steel

Enclosure Rating: IP65

Seal Material: PTFE

Internal details: stainless steel

Life cycle: min. 100 million cycles



Connection Ø (mm)	Pressure (bar)	Throughput (kv)	Weight (kg)	Medium temperature (C°)
6	from 0 to 50	0,3	0,20	-40° to +150°
10	from 0 to 50	0,4	0,24	-40° to +150°

Series VB

Case Material: Brass, Aluminum Alloy, V2A and V4A Steel

Enclosure Rating: IP65

Seal Material: PTFE

Internal details: stainless steel

Life cycle: min. 100 million cycles



Connection Ø (mm)	Pressure (bar)	Throughput (kv)	Weight (kg)	Medium temperature (C°)
6	from 0,05 to 50	0,3	0,3	-40° to +150°
10	from 0,05 to 50	0,9	0,32	-40° to +150°
12	from 0,05 to 50	1,9	0,34	-40° to +150°
16	from 0,05 to 50	2,4	0,36	-40° to +150°
22	from 0,05 to 50	2,8	0,41	-40° to +150°

Series VC

Case Material: Brass, Aluminum Alloy, V2A and V4A Steel

Enclosure Rating: IP65

Seal Material: PTFE

Internal details: stainless steel

Life cycle: min. 100 million cycles



Connection Ø (mm)	Pressure (bar)	Throughput (kv)	Weight (kg)	Medium temperature (C°)
16	from 0,1 to 50	4,5	0,65	-40° to +150°
22	from 0,1 to 50	5,5	0,7	-40° to +150°
28	from 0,1 to 50	6,5	0,75	-40° to +150°

Series VD

Case Material: Brass, Aluminum Alloy, V2A and V4A Steel

Enclosure Rating: IP65

Seal Material: PTFE

Internal details: stainless steel

Life cycle: min. 100 million cycles



Connection Ø (mm)	Pressure (bar)	Throughput (kv)	Weight (kg)	Medium temperature (C°)
28	from 0,2 to 50	12	0,95	-40° to +150°
35	from 0,2 to 50	13	1,1	-40° to +150°
42	from 0,2 to 50	14	1,25	-40° to +150°

We change markets

In 2019 created:

- **Micro valve designed for high pressure (from 0 to 80 bar)**
- **Manual shut-off and throttle valve**
- **Valve at high pressure (0 to 350 bar)**
- **Valve for CO2**
- **Clocked valve instead of expansion valve**

High pressure valve with back pressure relief

Specifications:

Material: steel

Pressure: 0-350 bar

Temperature: -195° to +150°

Coil Power: 6 W

Kit Weight: 155 g

Dimensions: height 7 cm / length 5 cm / width 3 cm

Benefits:

- collapsible
- compact
- accurate
- universal
- durable
- silent

Designed to perform tasks in high pressure environments.



Manual shut-off and throttle valve

Specifications:

Material: Brass, Steel

Pressure: 0-350 bar

Temperature: -150° to + 150°

At all kinds of series A, B, C, D

Modes of operation:

- Input pressure can be connected from both sides
- Close, open and any opening
- Actuation mechanism without height change

Benefits:

- collapsible
- compact
- silent
- durable



Clocked valve

Specifications:

Material: Brass

Pressure: 0–50 bar

Temperature: -100° to + 150°

Mediums: liquids, gases, aggressive, non-aggressive

Dimensions: height 0.2 cm / length 0.15 cm /
width 0.19 cm

Benefits:

- collapsible
- compact
- accurate
- universal
- durable
- silent

Replaces conventional expansion valve (thermostatic expansion valve). It has the same same construction as the solenoid valve, but has a lot of resources.

Valve operation is based on the principle of pulsating modulation. Refers to automatic installation controls.



Micro valve

Specifications:

Material: Brass, Steel

Pressure: 0–80 bar

Temperature: -150° to + 150°

Coil Power: 2 W

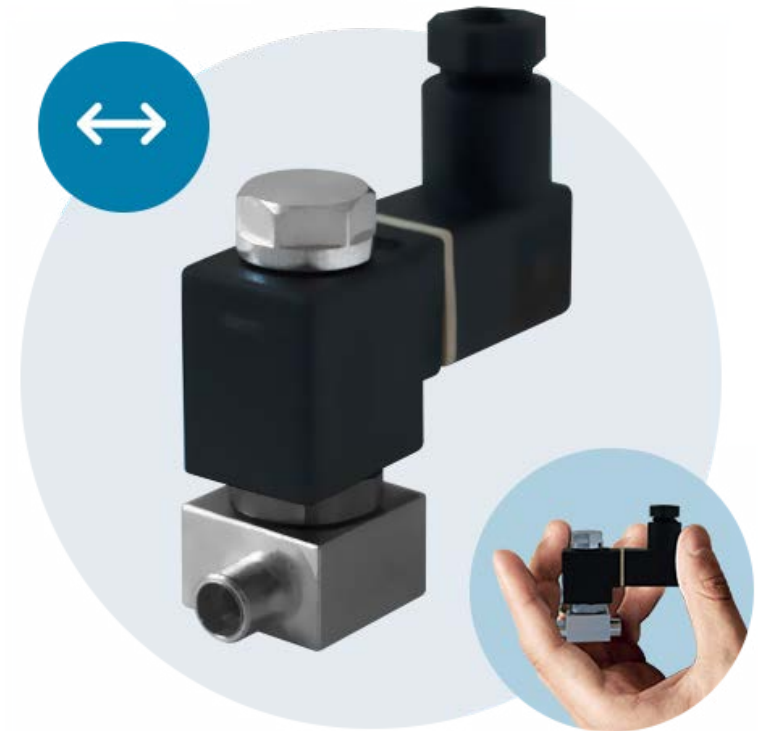
Wednesday: any

Kit- Weight: 90 g

Kit includes: valve, housing, magnet, plug

Benefits:

- collapsible
- compact
- silent
- universal
- durable



Reinforced valve

Specifications:

Material: Brass, Steel

Pressure: 0-350 bar

Temperature: -195° to + 150°

Kit- Weight: 300g

Dimensions: height 0.32 cm / length 0.17 cm /
width 0.30 cm

Benefits:

- collapsible
- compact
- accurate
- universal
- durable

Designed to perform tasks in low temperature and contaminated environments, different from the standard with a more powerful coil.



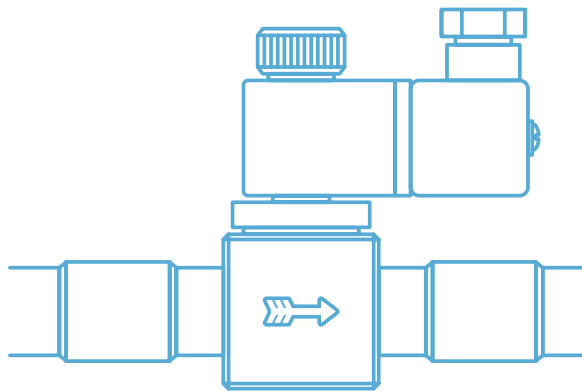
Compact
The smallest valve
on the market



Silent
Almost noiseless
switching



Durable
100 million
circuits



Universal

Designed for all installation
environments and methods



Plain

Easy installation, and
interchangeability



Economical

Low energy consumption
2.5 to 10 W

PARTNERS WHO TRUSTED US

AURORABINDERCTSEberspächerFRIGOBLOCKHOMAGJulaboKELVINKHSKONVEKTALAHNTECHNIKLeicaSCHMITZ
CARGOBULLSPHEROStechnotransTERMOTEKVötschWebastoWEISS
TECHNIKWÖLFLE



WOLFGANG OFFENWANGER

Company President



GRETA BAUER

Sales manager

OFFENWANGER

fluid components

OUR ADDRESS:

Neulingen-Göbrichen,
Südweg 7 D-75245

SALES DEPARTMENT:

Phone: +49 7237 48570
Fax: 7237 / 48 57 - 18

FOR ALL QUESTIONS:

from 7:00 to 16:00
info@offenwanger.com
